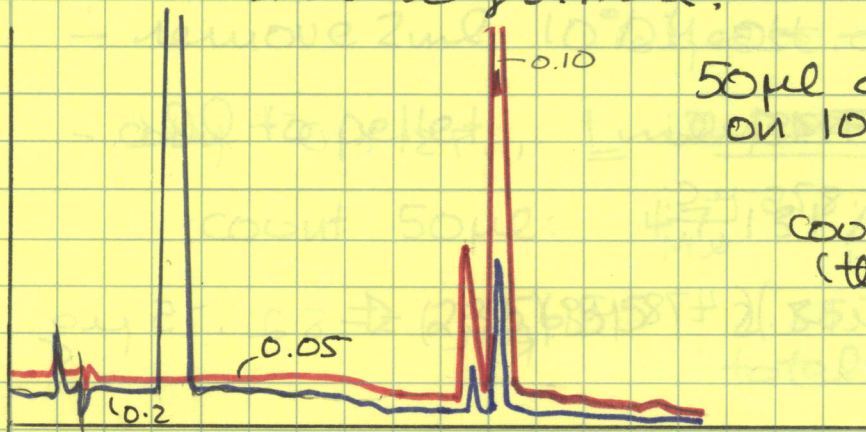


10-27-76 Adduct Purification:

Sample: 10-26-2 - this is the mother liquor from which the crystalline material formed.



50 μ l of 10-26-2 (sampled on 10-27-76)

counts: $5034/4 = 1258.5$ cpm
(the vol. of spl. = 20.4 μ l)

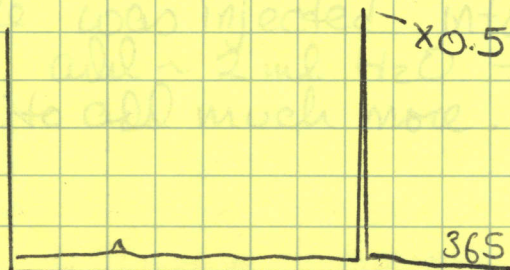
10-27-76 Sample 10-27-1

Dissolving of Pellet of ? Adduct -

- A few crystals (actually quite a bit after centrifugation) were taken from the washings that had been left behind after rinsing flasks containing prep. column effluents.
- add \sim 2 μ l H_2O - no apparent dissolving, even w/ heating
- \sim 3 μ l H_2O - same
- 0.1 ml MeOH - same
- bring to 1 ml w/ 10% MeOH - sample now is \sim 10% MeOH - heat, centrifuge

LC:

Count: 3613 cpm
 \Rightarrow 36,130 total cpm in sample



sample looks quite pure by 365 and 254