

11-7-76

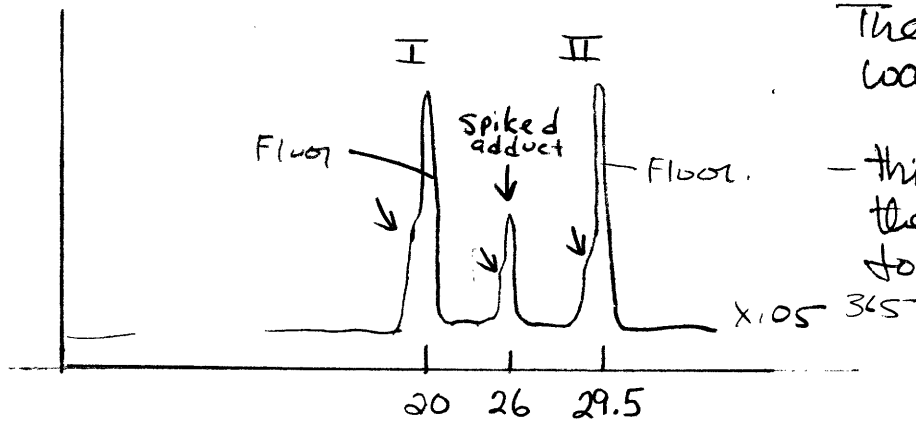
(actually 11-8-76 - all samples labelled 11-~~7~~ are really 11-8)

## 1. Preparation of Field Description M.S. Sample

- SAMPLE**  
11-7-2-J
- Sample: the crystals obtained from 11-3-2
  - Transfer most of the crystals into PS vial (tared)
  - evap. off MeOH w/ vacuum  
weights dropped from 4.20 mg  $\rightarrow$  3.78 mg  $\rightarrow$  2.96 mg
  - sample given to Al Nazzari

The rest of the crystals were separated into two parts. A few were dissolved in DMF and injected into LC - looked good - only one late-eluting peak at exactly  $t_R$  of adduct.  
 \*\* (Standard used for this was 50  $\mu$ l 10-5-1 which gave nice peak x.05 at 26 min)

- ## 2. Analysis of Acetylated Reaction Mixture - This sample was described on the previous page.
- Inject 10  $\mu$ l of MeOH-recon. sample.
  - Results



The late-eluting peak was collected!

- this was repeatable - and the adduct was confirmed to be absent from the ctgm.

- probably caused by pyridine