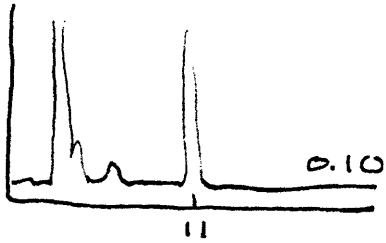


77

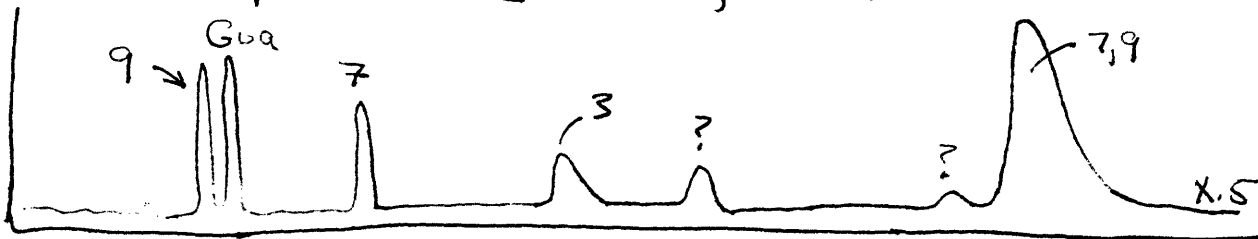
Generation of Publishable 9-MeGua Ctgm.

Sample: 20µl 1-4-1 (adduct meth. hydrolysate)

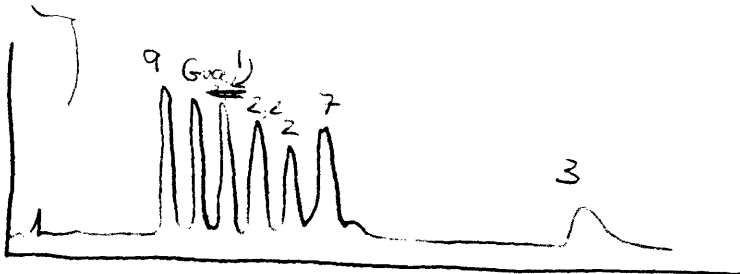


Analysis of Guanine Methylation Sample

Sample: 5µl 12-31-2 (6 hrs, 25°C, DMS(DMA))



Methylated Base Chromatogram for Publication



P-2900 $\nu = 0.6$ 0.1M A⁺ pH 4.0

T-62 25X 0.22 DCHA

note - the 1-MeGua had to be made by hydrolysis of 1-methylguanosine.