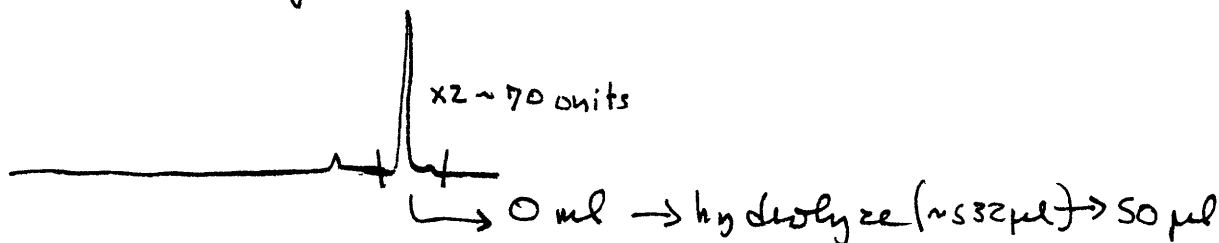


2-3-77 Methylated Base Analysis: on "Diol" Hydrolysate from Adduct Methylation II

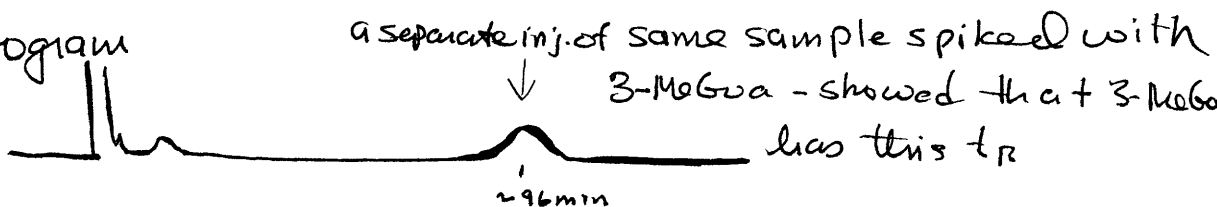
Inject: 50 µl of sample after filtration. The conditions were different than before. S=37 (LDC pump) F=2800/2500 - with Rheodyne valve leaking slowly. PH 4.0, DC-4A column T=69°C - but I think it actually was lower. SF 770 detector.

Original Chromatogram: 1-21-2P



∴ ~ 1/10 sample injected => ~ 7 -> 3 units x 2 = 60 units x 0.10 or ~ 140 units x 0.04

Chromatogram



Possible Explanation of Data:

