

25 μ l 11-9-2 (of 200 μ l MeOH) = 2202cpm

11-9-76

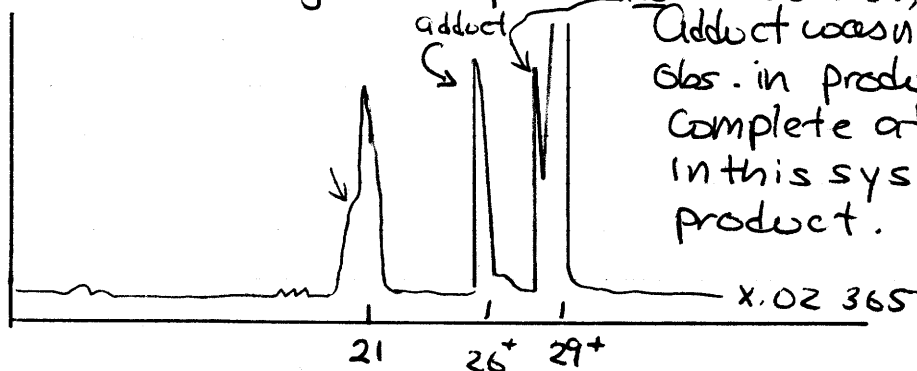
Acetylation of Adduct - II (Jon 11/5/76)

- Take ~ 0.1 mg adduct (11-7-5-J) and add 300 μ l dry pyridine - heat ~ total of 5 min at 100°C
- most dissolved, but still some residue
- add 300 μ l dry acetic anhydride
- let stand at room T 4 hrs. - take sample (100 μ l)

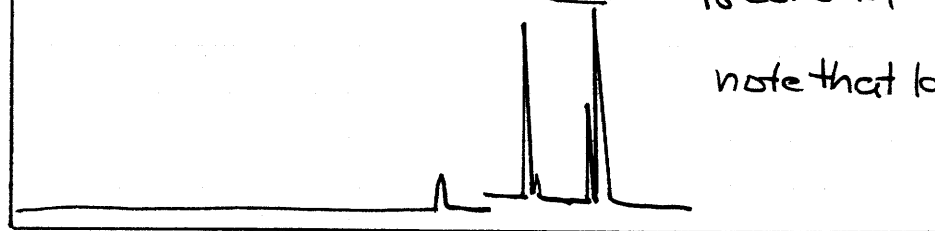
nomenclature:

- total sample = 11-9-1
- 100 μ l sample = 11-9-2 (also, see below)
- store 11-9-1 in refrigerator
- dry 11-9-2 overnight in vac. des.
- add 200 μ l of MeOH \rightarrow count 25 μ l (of 200 μ l)

11-10-76

- inject 20 μ l: not fluorescent!

Adduct wasn't added to sample - but was obs. in products - possibly (1) Rx not complete at 4 hrs (2) better solubil. in this system, (3) degradation product.

Same Column on NEW C₁₈ Column (No. 3) - micromeritics.

note that last two peaks are resolved

11-9-76

Control: called 11-9-2 - heated sample in pyridine - looks pretty good - but adduct pk. doublet, probably do to contaminating pyridine.