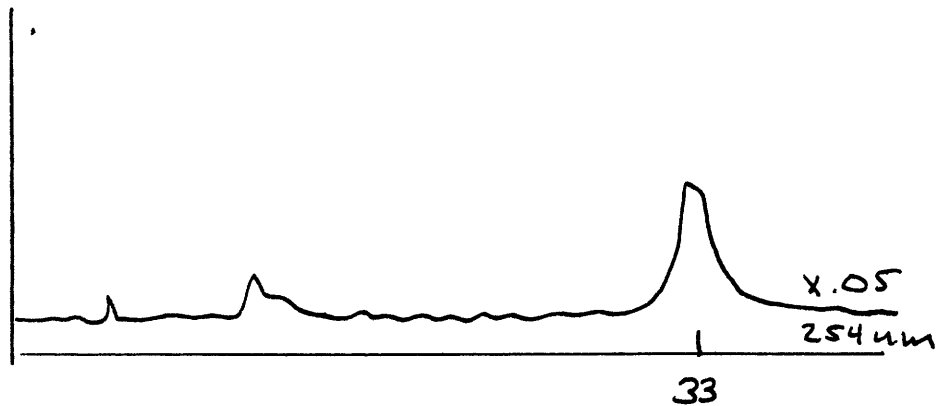


12-31-76 Adduct on Ion Exchange System

Conditions: 25% B (A = 2% EtOH in 0.1M AF pH 4.1; B = 4%)



12-31-76

Subject

Instructor's Name

Adduct Methylation I

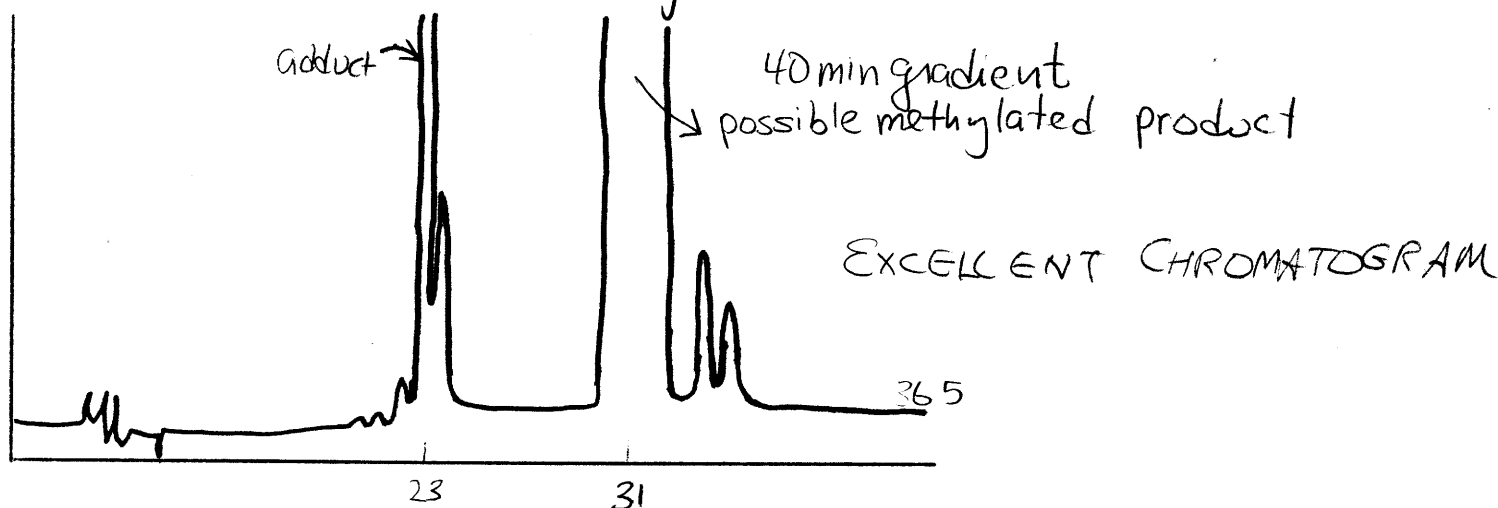
Samples: 12-31-1 : Adduct (~200µg) harvested from sample prepared on 10-26-76. Crystals washed several times and checked for purity by LC (may have been tiny amt. Diol - no gua)

Sample 12-31-2 : Gua

- dry adduct and Gua samples in PS vials
- add 50µl DMA
- add 20µl DMS $t_0 = 12:00 \text{ pm}$

One hour later: the adduct spl. was dissolved, the Gua sample was not.

- at 3 hours, a 5µl portion of the reaction mixture was analyzed.



- continue reaction for another 3 hrs and store in refrig. (total at room t = ~~6~~ 6 hr.)