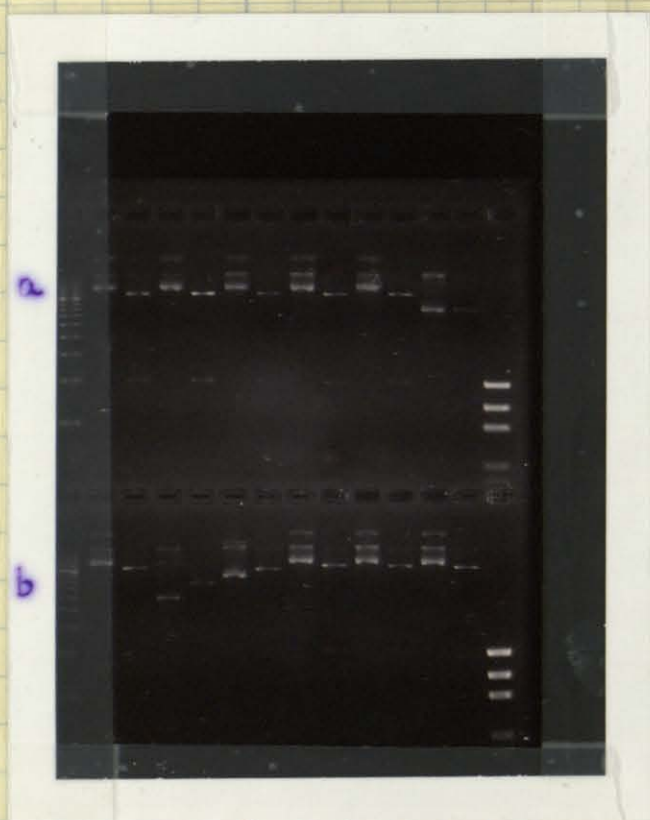


Minipreps / Bam HI digests of p. 150 Transformation Monday, July 14, 2003

- minipreps were done on all 24 colonies from p. 3-151 using Eppendorf's perfectprep plasmid mini kit.
- The minipreps were digested w/ Bam HI to excise a piece of ≈ 1000 bp if it contains the pax insert within the pGex- HT- 2 (see p. 3-130 for picture of cut sites).
- Bam HI Digest
 - 8 μ L of DNA from digest
 - 12 μ L of the Bam HI master mix below
 - Bam HI master mix (enough for 26 digests)
 - 52 μ L 10 \times Bam HI buffer (2 μ L each)
 - 247 μ L water (9.5 μ L each)
 - 5.2 μ L 100 \times BSA (0.2 μ L each)
 - 6.5 μ L Bam HI (0.25 μ L each)
 - The digest was incubated 1.5 h at 37 $^{\circ}$ C. 5 μ L of 5 \times loading buffer were then added and a 1.5% agarose gel was run.



- In 1a 2 μ L 500 bp molecular ladder
 2a 4 μ L of miniprep 1
 3a 5 μ L (incl. buffer) of Bam HI #1
 4a 4 μ L miniprep 2
 5a 5 μ L Bam HI #2
 6a 4 μ L miniprep 3
 7a 5 μ L Bam HI #3
 8a 4 μ L miniprep 4
 9a 5 μ L Bam HI #4
 10a 4 μ L miniprep #5
 11a 5 μ L Bam HI #5
 12a 4 μ L miniprep 6
 13a 5 μ L Bam HI #6
 14a 50 bp molecular ruler (top rung = 1000 bp)
 15a

1 2 3 4 5 6 7 8 9 10 11 12 13 14

- | | | | | | | | | |
|----|----|------------|----|---------|-----|---------|-----|-------------|
| In | 1b | 500 ladder | 5b | Bam 8 | 9b | Bam 10 | 13b | Bam 12 |
| | 2b | mini 7 | 6b | mini 9 | 10b | mini 11 | 14b | 50 bp ruler |
| | 3b | Bam 7 | 7b | Bam 9 | 11b | Bam 11 | | |
| | 4b | mini 8 | 8b | mini 10 | 12b | mini 12 | | |