

Test cleavages as the SPPS (on 9050) progressed

Friday 1/17/02

test cleavages:

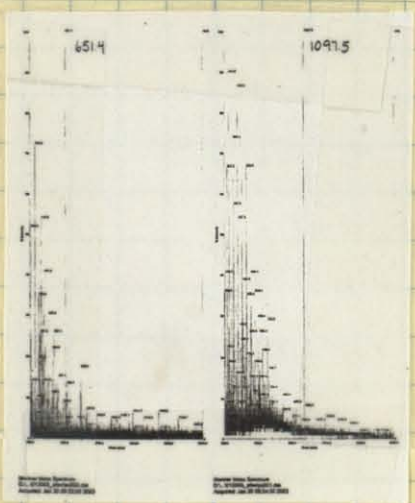
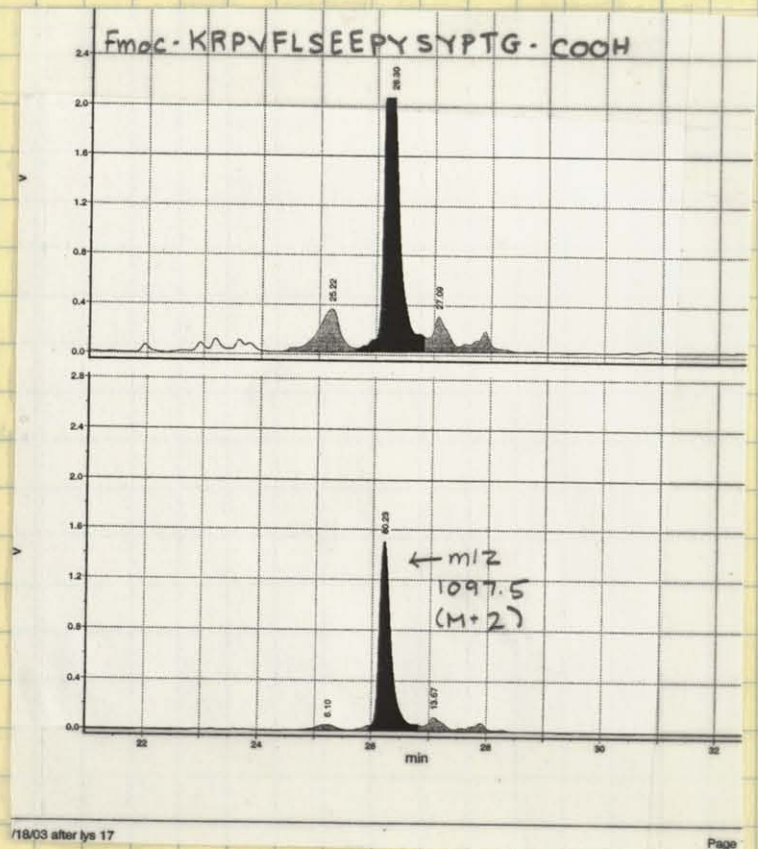
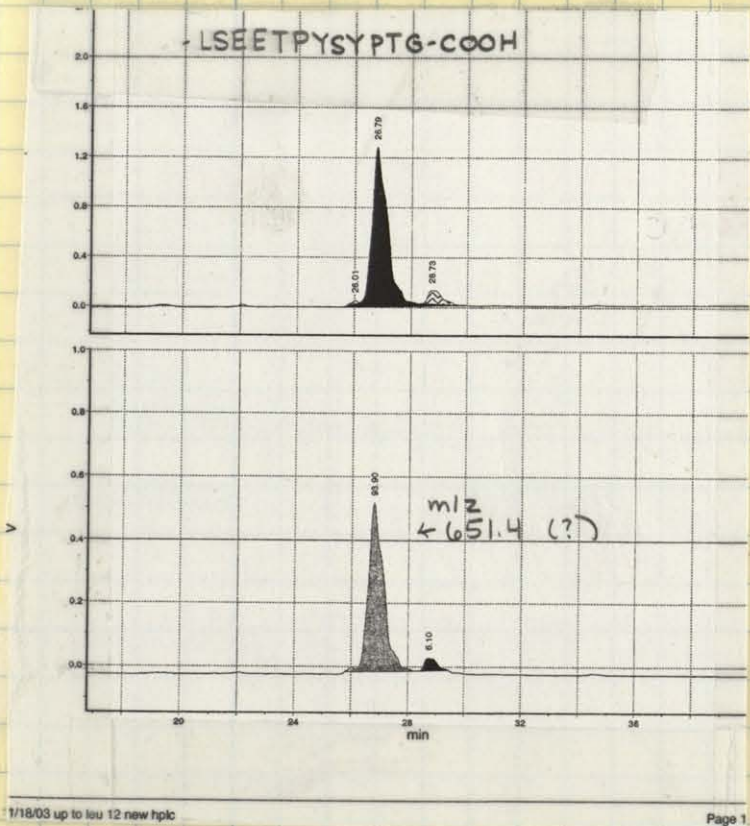
after Leu: Fmoc-LSEETPYSYPTG-COOH (12-mer) 1565.66 (M+2 783.83)

after Lys: Fmoc-KRPVFLSEETPYSYPTG-OH (17-mer) 2193.45 (M+2 1097.72)

after Glu: Fmoc-ESTTSHISKRPVFLSEETPYSYPTG-OH (25-mer) 3036.31 (M+3 1013.1)

1-36 PAX I mw: 4000.42 (w/out Fmoc) (M+3 1334.47)

1-36 PAX I w/ His 4 tag: NH<sub>2</sub>-HHHHMDD...PTG-OH (40-mer) 4548.98 (M+5 910.19)

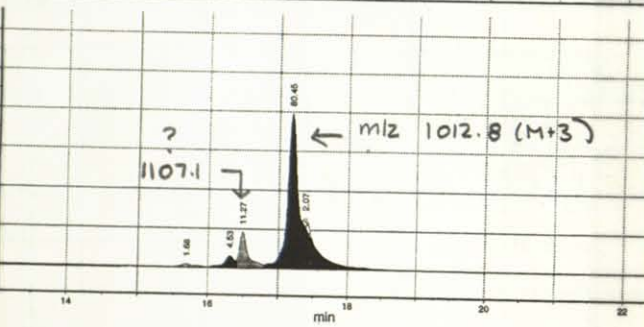
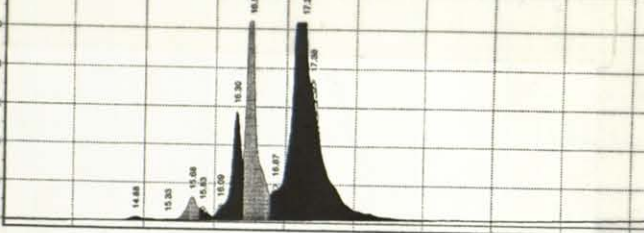




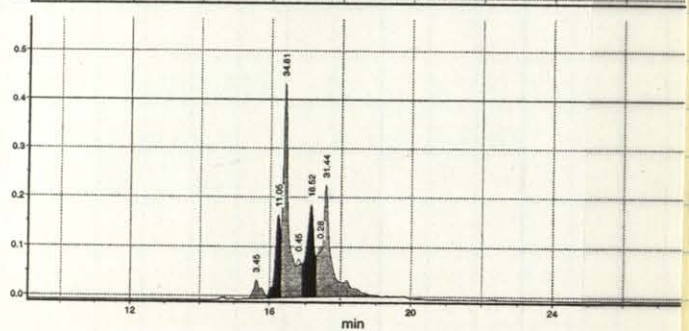
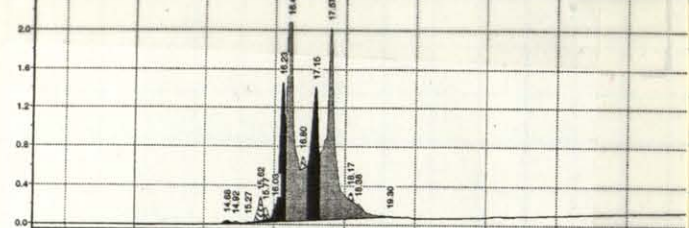
(test cleavages continued)

Monday, January 21, 2003

Fmoc-ESTTSHISKRPVFLSEETPYSYPTG-OH

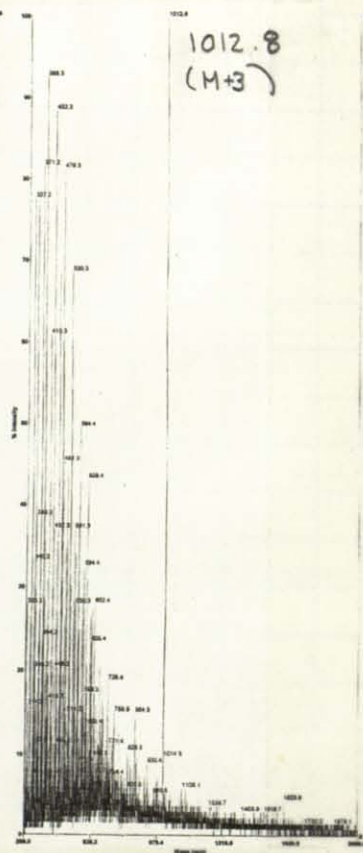
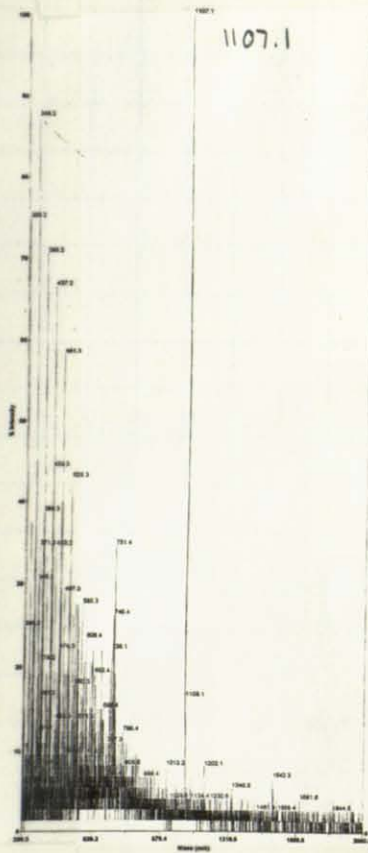


1-36 PAX I (NH<sub>2</sub>-MDDL... YPTG-COOH)



Mariner Spectra 475 ARSESP - 1107.1.D

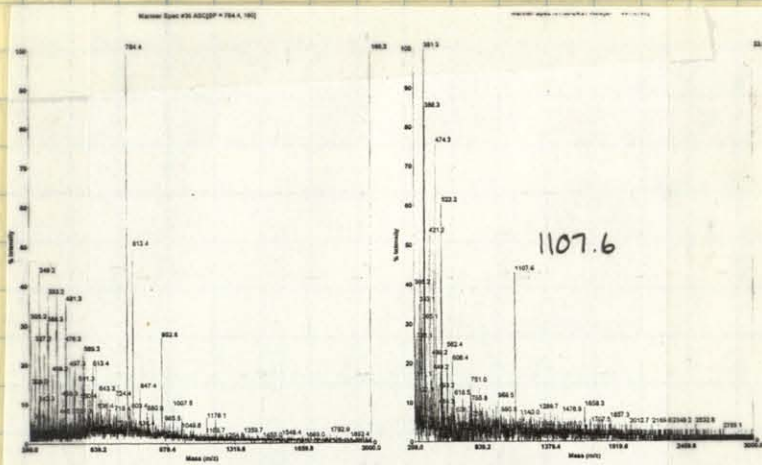
Mariner Spectra 475 ARSESP - 1012.8.D





His 4 Tag added by hand to 1-36 of PAX 1

Monday, Jan. 21, 2003



peptide for:  
 NH<sub>2</sub>-HHHHMDD...PTG-COOH:  
 4548.98  
 (M+5 → 910.79)

Hmm, a possible source of the 1107.6 peak...

Ac-ISKRPVFLSEETPYSYPTG-COOH  
 (a capped fragment)  
 2213.48 (M+2 → 1107.24)

